

THE GLOBAL CONNECTION
A publication of the Global Education Program
Skyline School, Solana Beach, California

IMPORTANT DATES

- 4/8-4/12 Spring Break- NO SCHOOL

- 4/26 Mrs. Anderson's and Mrs. Hacker's classes to the Marine Science Floating Lab

- 4/26 International Festival, Solana Vista, 5-7:30 PM

- 5/11 GE's Gold Rush Day

- 5/11 GE's Square Dance, 6:30-8:00 PM, Solana Pacific



April 2018

**MARK YOUR CALENDARS FOR GOLD RUSH DAY
(FRIDAY MAY 11)**

It is time again to rustle up a costume and prepare your child to experience Gold Rush California. As part of our continuing study of migration and immigration, we will be studying the westward movement in the United States. We will look at reasons for heading west, routes potential miners took to get to the gold fields, and life in the Gold Rush towns and camps. All of Global Ed. will participate in a day in Gold Rush California. Students dressed in costume will visit an old-fashioned school, an assayer's office, a mining camp to pan for gold, a saloon, and a theater. After working up an appetite in the morning, the children will gather for a big, Gold Rush luncheon. We will be calling on our parent volunteers who signed up for this event last fall to help with lunch set-up and with the BBQ. Specific assignments for food contributions to the luncheon as well as costume suggestions will be sent home in the near future. GOLD RUSH DAY IS FRIDAY MAY 11.

**GLOBAL ED. SQUARE DANCE
(FRIDAY MAY 11: 6:30-8:00 PM)**

As part of our Gold Rush celebration, we will be having a square dance complete with a square dance caller and a band the evening of our Gold Rush Day, May 11. We will be swinging our partners at 6:30 pm at Solana Pacific. We encourage all of the Global Ed. families to attend. These fun evening events really help to build community in Global Ed., so we hope to see you the evening of Friday May 11.

Global Education Contact

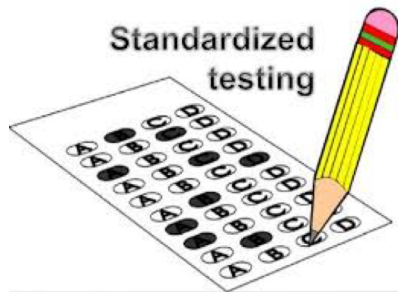
Information

Solana Highlands phone:
858. 794.4300

Our website:
[sbsd.schoolwires.net/
Domain/519](http://sbsd.schoolwires.net/Domain/519)



[/SolanaBeachGlobalEd](https://twitter.com/SolanaBeachGlobalEd)



GE FUNDRAISING

UPDATE

Thank you so much for your support for Global Ed's Annual Fund Drive. We have raised \$21,350 in this year's Fund Drive making great progress towards our goal. Adding in the funds raised from the Global Gala and ticket sales for the upcoming 1984 Olympics Social, we have raised \$36,350 to date in our efforts to raise \$40,000. We appreciate your donations to help fund our instructional aides in our primary classrooms, special cross-age events, and bus transportation for field trips. Thank you! Thank you!

UPCOMING STANDARDIZED TESTING

The students in Global Ed. In grades 3-6 (along with all 3rd-6th grade students in SBSD) will participate in standardized testing this spring. Parents can help support their child by making sure that their child sleeps well, eats well, and arrives at school on time. We encourage the children to bring healthy snacks to keep them fueled through the testing period each day. The test your child will take is a standards-based assessment designed to see how well your child has mastered the Common Core standards for his/her particular grade level. It is important to note that the test is just a small piece in understanding your child's learning. The standardized test is a norm-referenced test designed to compare children who take the test during the same time frame. Researcher and educator Lucy Calkins describes some fundamental points about norm-referenced tests in A Teacher's Guide to Standardized Tests, "Norm referenced tests are designed to produce scores that fall on a bell curve. To achieve this, items considered for placement on the test are pre-tested on a sample of students that is supposedly representative of our nation's demographics. As a result of this pre-testing, a set of items is chosen that contains only a few questions that most students will be able to answer. The bulk of the items placed on the test are ones that only some, but not many of the students can answer. The problem with this is that the test development process is guided by an attempt to sort and rank students in relation to each other. It is not guided by an effort to reflect what students actually know and can do." (p.23-24). Please keep in mind your child's overall academic and social growth this year as your child enters testing week. There is much to celebrate when you look at the big picture of your child's learning.

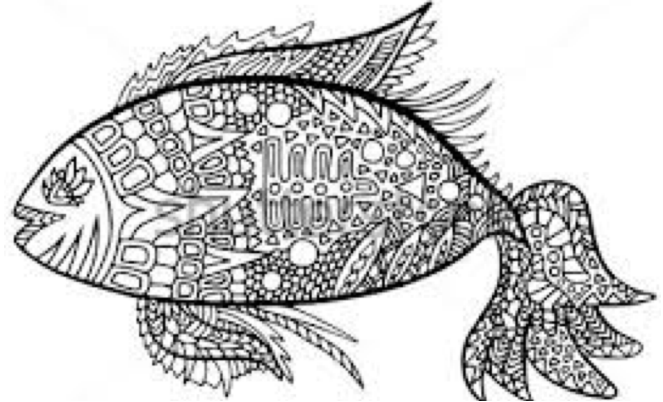
BEING ON TIME EQUALS A GREAT START TO THE DAY!

The first bell for GE kids rings at 8:50. Children are to be in class by 8:55 ready to start their learning for the day. The 8:55 bell is a tardy bell. The GE teachers appreciate your efforts to get your child to school on time, so that we can have a smooth start to the morning.

PRIMARY GLOBAL ED NEWS

SHARING SCHEDULE FOR MARCH

- April 2-6: Desert animal report
- April 16-20: Open sharing
- April 23-27: Tall tale story frame
- April 30- May 4: Open sharing
- May 7-11: Fantasy fish



FANTASY FISH

(May 7-11)

TALL TALE SHARING (April 23-27)

As our country grew west with the movement of pioneers and those seeking their fortunes in the California gold fields, so did the tall tales about the men and women who faced the hardships of moving west. Your child will be studying the tall tales of famous American folk heroes and the exaggerated tales of characters like Paul Bunyan and Pecos Bill. For this sharing, your child will receive an outline of a tall tale with deleted words and phrases. S/he will use this story frame to create a new version of a tall tale by writing in new words and phrases that keep the exaggerated tone of a tall tale. Please have your child practice reading his/her new tall tale before sharing day.

Primary GE classes will study the biome of the ocean in May. As part of this unit of study, your child will use his/her imagination to create a "fantasy fish". The children should consider the fish's ADAPTATIONS to its habitat (characteristics that help it hide from prey, defend itself, hunt etc.) The three-dimensional fantasy fish should be created from paper and other "found/recyclable" items. Since it is to be three-dimensional, BOTH sides of the fish should be decorated before stapling the two sides of the paper fish together and stuffing the fish with scrap paper before placing the final staples. Your child's fish should have a name. Your child should be prepared to describe the fish's adaptations and the reasons for the adaptations on sharing day.

